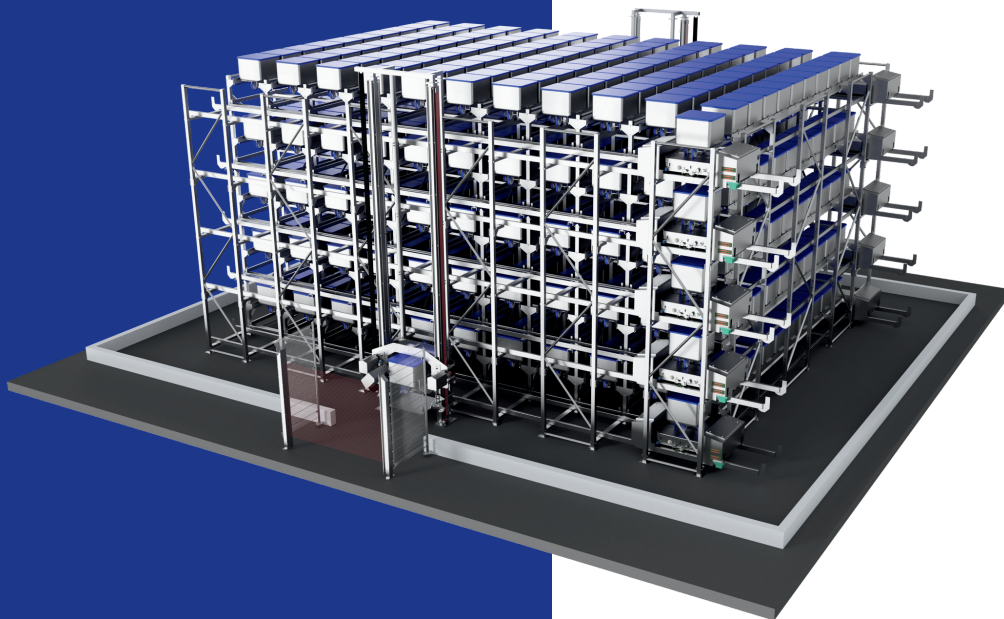




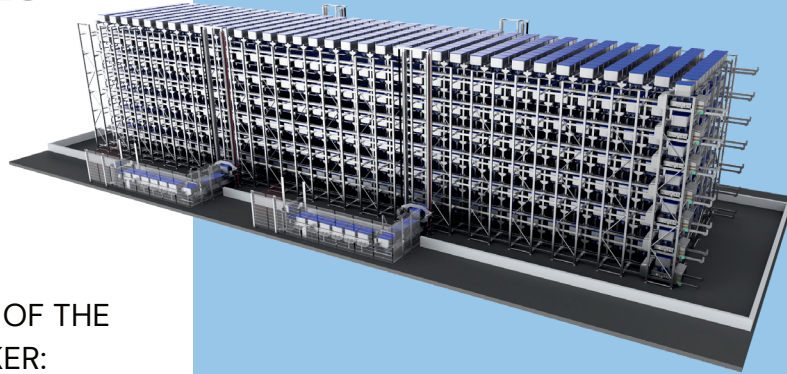
# MEET THE BINSTACKER<sup>®</sup>

– a patented revolutionary storage solution for all kinds of meat before or after further processing

The BinStacker is your ideal solution for effortlessly and efficiently stacking Eurobins, SS containers, and Dolavs. Save labour costs, space and time by investing in a smart system that takes your cold storage to another level.

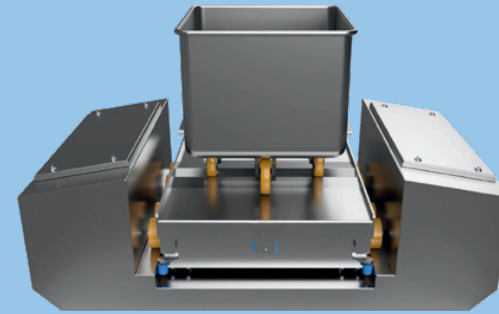


A PATENT-APPROVED INVENTION BY FINMATEC

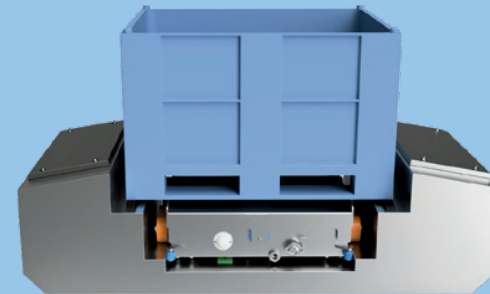


## BENEFITS OF THE BINSTACKER:

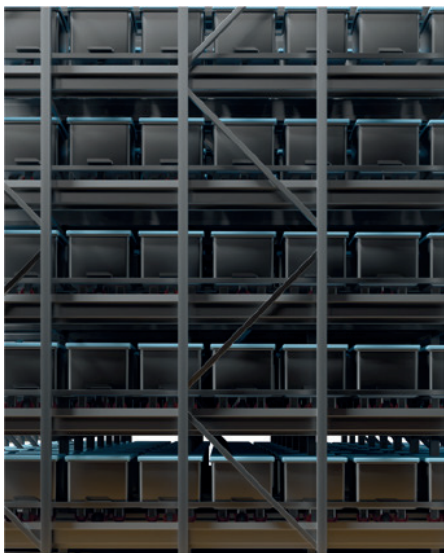
- Optimized space due to automatic stacking possibilities
- Energy savings - lower need for cooling energy due to maximized storage room utilization
- Reduced need for manual handling
- Upgraded system traceability
- Increased capacity
- Enhanced cleanability and food safety procedures
- Integrated weight registration at the infeed point
- Full traceability with RFID or Barcode identification



**EURO BINS**



**DOLAVS**



*The BinStacker is your all-in-one solution for storing food efficiently. With its many options for add-ons and accessories, your ceiling is the only limit.*

MORE INFO ON THE BINSTACKER :  
[www.binstacker.com](http://www.binstacker.com)

### HOW IT WORKS

The BinStacker system is a multi-level smart storage system that loads and unloads the bins to and from the multi-level storage with a wireless control system running on the X and Y axes.

The battery-driven technology is equipped with automatic charging during operation for a long-lasting solution that enhances food safety, improves cleanability and simplifies storage management. The BinStacker solution has a storage management software system and runs with Siemens PLC system.

**The system is suitable for Euro bins, SS containers and Dolavs.**

### THE PRODUCT FAMILY

We offer five models in different sizes to ensure that you get the most out of your space, with multiple options for add-ons that make your system scalable.



## OPTIONS

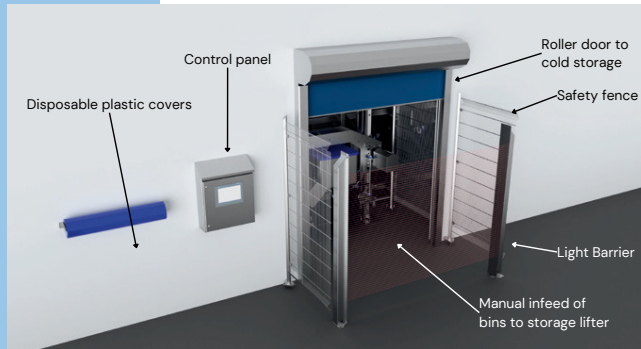
### INFEED & OUTFEED

- Infeed lifter
- Infeed/outfeed buffer conveyors (the standard configuration for Celsius M1000 and Kelvin L2500 includes ten pieces)
- Weight registration

- RFID registration
- Barcode registration
- Wheel cleaning system
- Doubled capacity (not applicable for Fahrenheit S100)

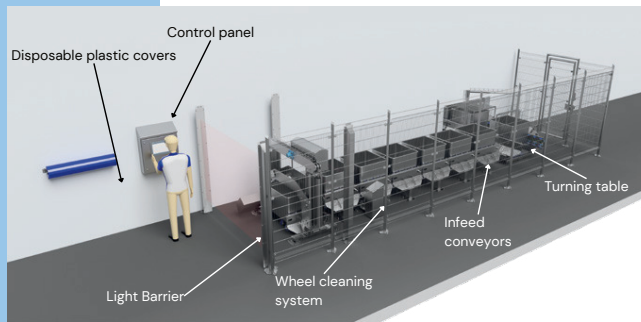
### Infeed of bins

STANDARD



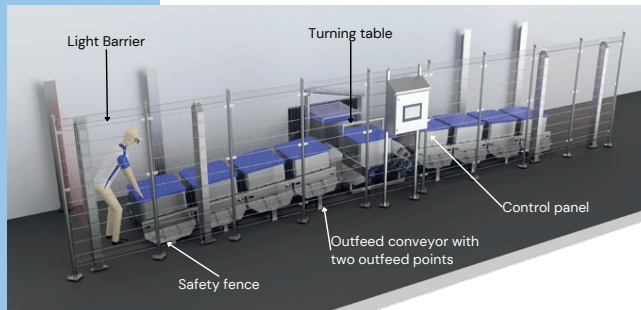
### Infeed of bins

OPTIONAL



### Outfeed of bins

OPTIONAL



### ADD-ONS

- Different number of floors
- 300 L Euro Bin/Meat Cart
- Dolav container
- SS Container

### SERVICE

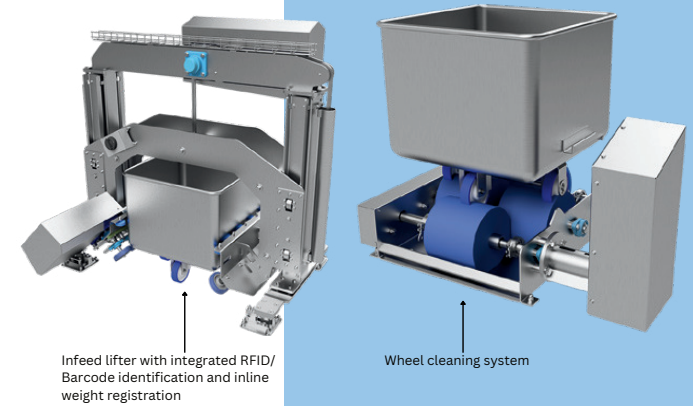
- Cleaning & service platforms
- Overhead crane - Shuttle lifting system
- Mobile HMI - Manual mode
- Service contract - 2 years/5 years

### ACCESSORIES

- Disposable plastic covers (to avoid contamination between floors)
- Floor bottom sheets (to avoid contamination between floors)
- Stainless steel covers
- 200 L Euro bins
- Cabling main cabinet -> equipment
- Integration with customer ERP
- Warehouse Management Software

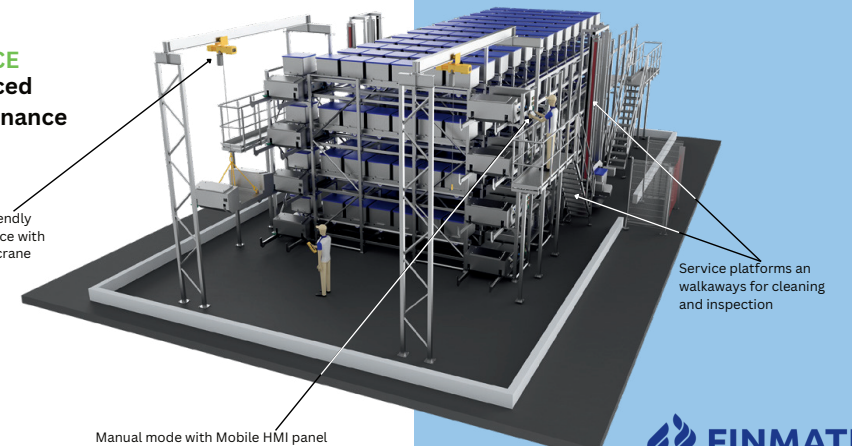
### Features at infeed

OPTIONAL



### SERVICE Enhanced maintenance

Service friendly maintenance with overhead crane



Finmatec is a Nordic supplier of systems for handling raw materials in the food and processing industries. We take full responsibility for delivering solutions tailored to our customers' needs.

Our mission is to optimize productivity through customized solutions based on our extensive know-how and years of experience.

You can learn more about our BinStacker at [www.binstacker.com](http://www.binstacker.com)

## CONTACT INFORMATION

Our agents and dealers are located internationally; find the closest one to you on our website!

[www.finmatec.fi](http://www.finmatec.fi)

Finmatec Oy Ab  
Mottisenkatu 3  
67700 Kokkola  
FINLAND

[www.finmatec.fi](http://www.finmatec.fi)  
[info@finmatec.fi](mailto:info@finmatec.fi)

